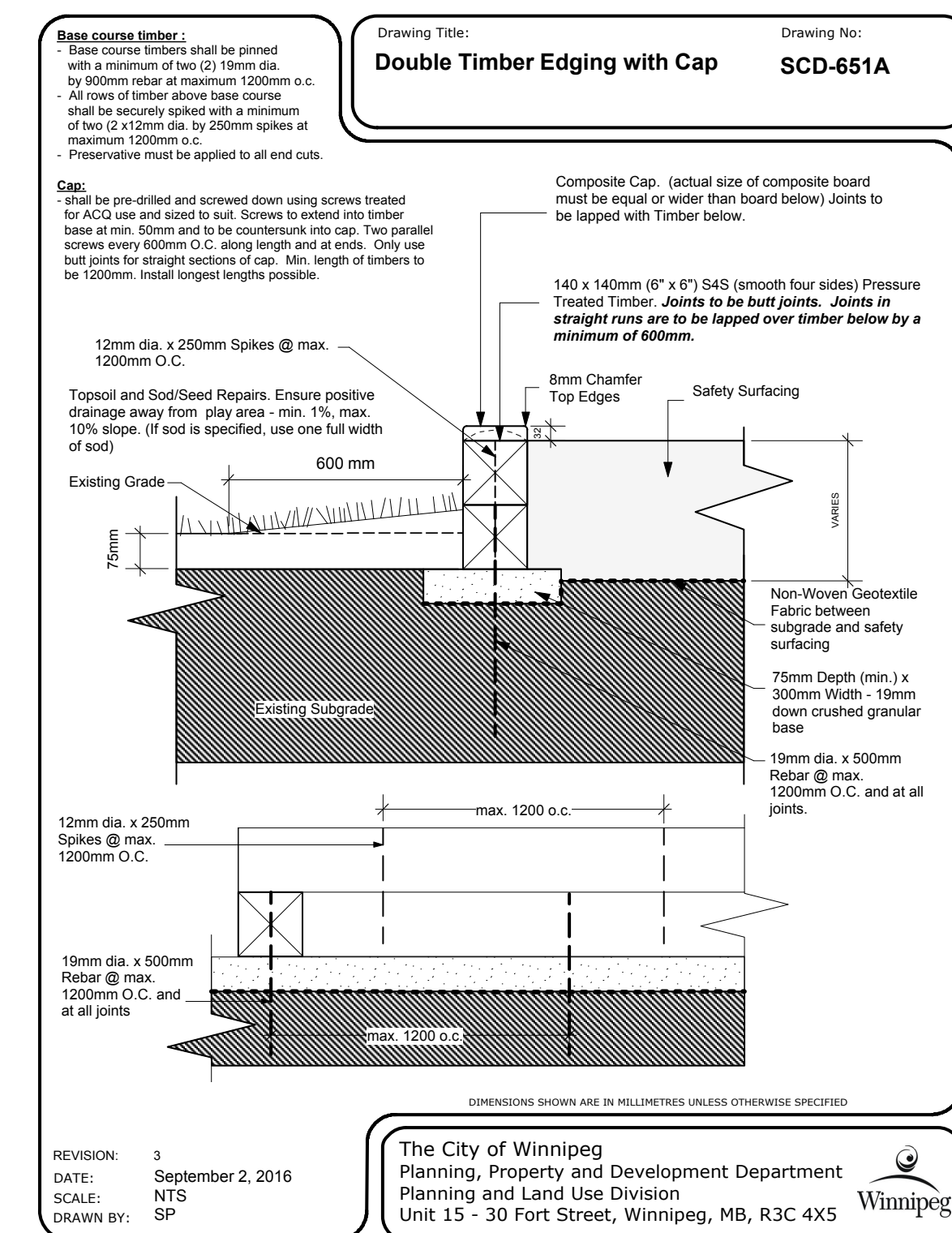
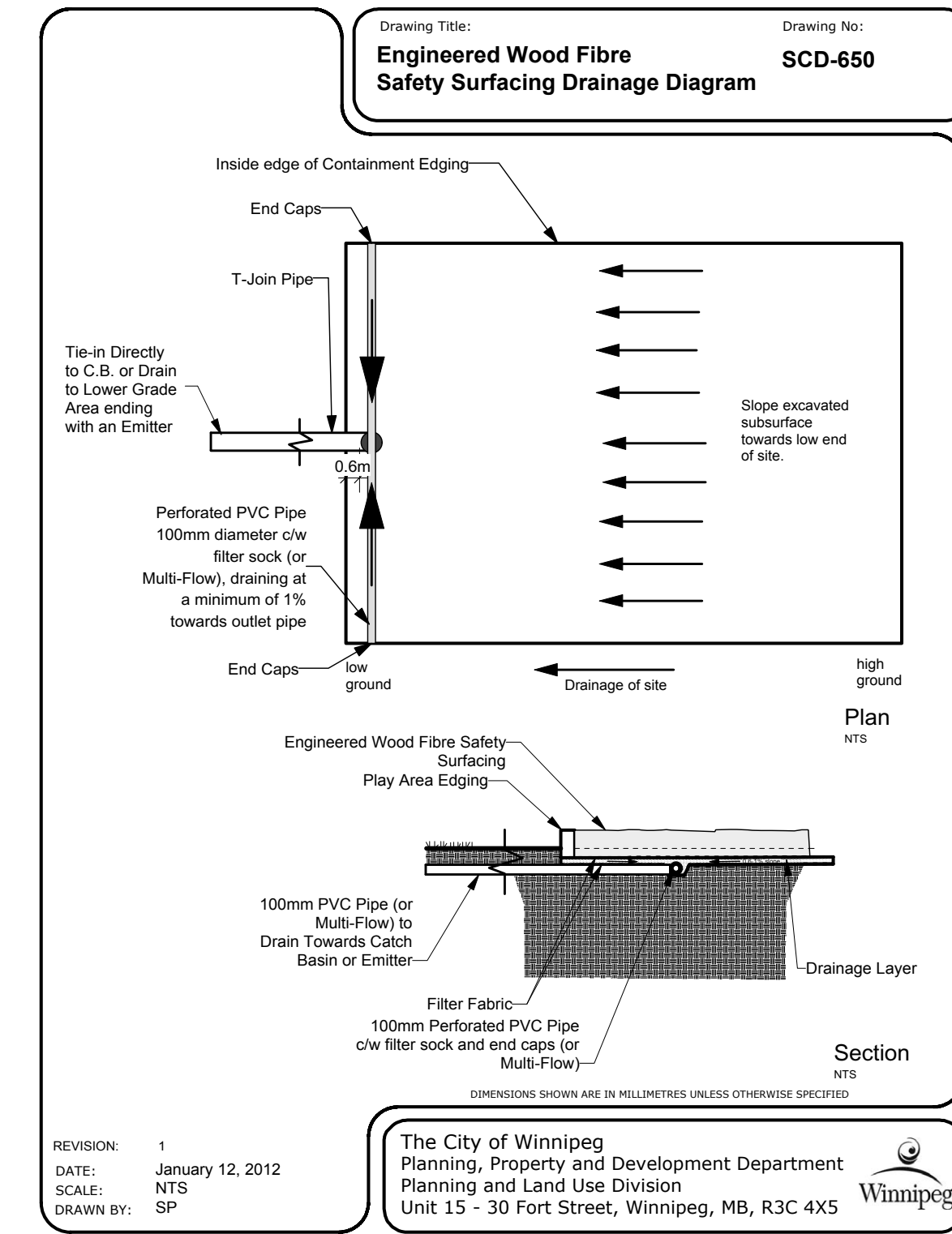


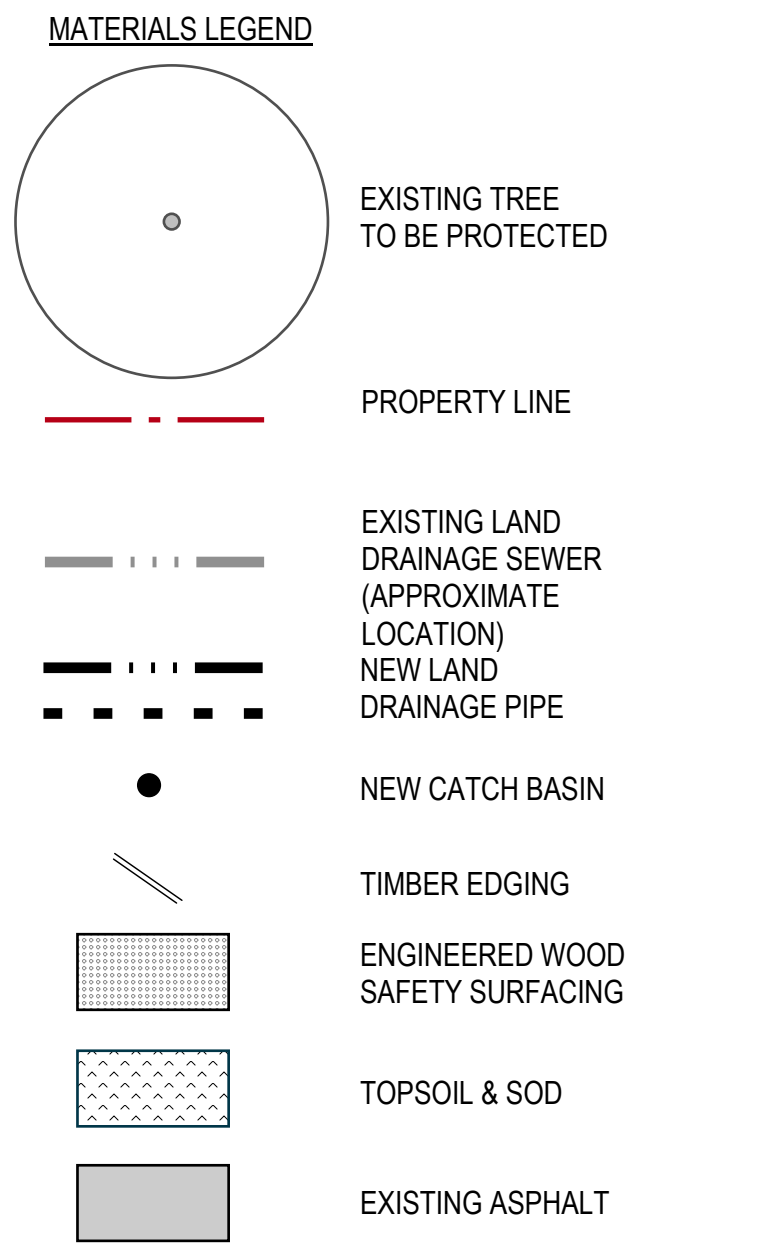
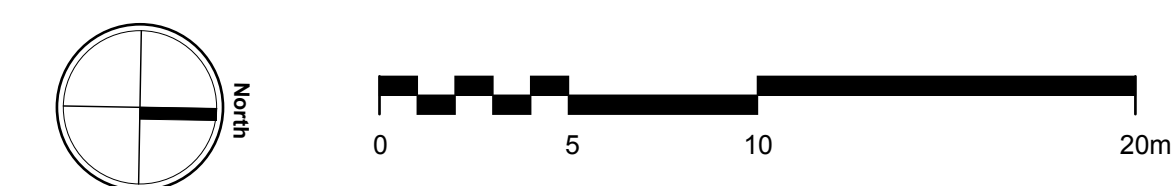
1
L1.1 LAYOUT & MATERIALS PLAN
SCALE 1:200



2
L1.2 TIMBER EDGING
SCALE N.T.S.



3
L1.1 ENGINEERED WOOD FIBRE SAFETY SURFACING
SCALE N.T.S.



- LAYOUT NOTES:**
- OBTAIN LOCATES AND CLEARANCES FOR ALL SERVICES FROM THE INDIVIDUAL UTILITIES PRIOR TO PROCEEDING WITH CONSTRUCTION.
 - ALL DIMENSIONS ARE IN METRES UNLESS OTHERWISE SPECIFIED.
 - STAKEOUT DESIGN AND CONFIRM LAYOUT WITH CONTRACT ADMINISTRATOR ON SITE PRIOR TO ROUGH GRADING.
 - REPORT ANY ON SITE DISCREPANCIES TO THE CONTRACT ADMINISTRATOR IMMEDIATELY.

ISSUED FOR CONSTRUCTION	FEB. 12, 2017
ISSUE NOTES	DATE

THIS DRAWING MUST NOT BE SCALED.

THE GENERAL CONTRACTOR SHALL VERIFY ALL DIMENSIONS, DATUMS AND LEVELS PRIOR TO COMMENCEMENT OF WORK. ALL ERRORS AND OMISSIONS TO BE REPORTED IMMEDIATELY TO THE LANDSCAPE ARCHITECT.

VARIATIONS & MODIFICATIONS TO WORK SHOWN ON THESE DRAWINGS SHALL NOT BE CARRIED OUT WITHOUT WRITTEN PERMISSION FROM THE LANDSCAPE ARCHITECT.

THIS DRAWING IS THE EXCLUSIVE PROPERTY OF THE LANDSCAPE ARCHITECTS AND CAN BE REPRODUCED ONLY WITH THE PERMISSION OF THE LANDSCAPE ARCHITECTS. IN WHICH CASE THE REPRODUCTION MUST BEAR THEIR NAME AS LANDSCAPE ARCHITECTS.

PROFESSIONAL SEALS



PROJECT TITLE
SUN VALLEY PARK ENHANCEMENT
WINNIPEG, MANITOBA

SHEET TITLE
LAYOUT & MATERIALS PLAN, & DETAILS

DRAWN RG	REVIEWED MG	DRAWING NO. L1.1
SCALE AS NOTED	PROJECT No. 16-063	R-0

DATE PRINTED
3:43 PM Tue, Jan 16, 2018